

Item Used

LD-80	LD-300	
		Included item
Lens (HL-300)	Lens (HL-300)	Hexagonal wrench (medium)

Replacement Method

1. Make preparations for the replacement.

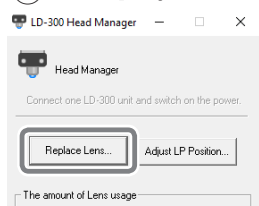
- 1 Turn on the machine and the computer, and then check that they are connected.
- 2 Open the front cover.
- 3 Remove all the jigs other than the base table.

2. Remove the lens.

* Figures may appear differently depending on the model. (Figures in this manual are of LD-300 products.)

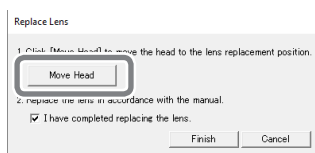
1 Move the head to the lens replacement position.

- 1 Start LD-300 Head Manager.
- 2 Click [Replace Lens].

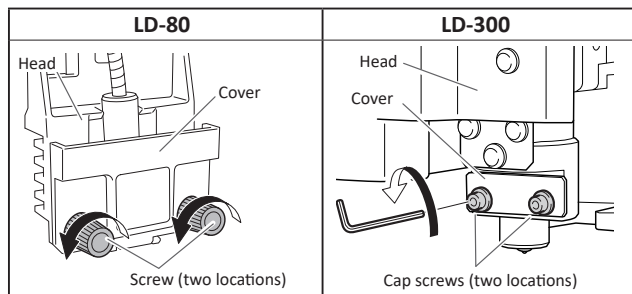


3 Click [Move Head].

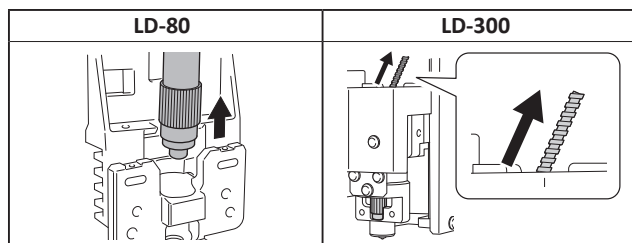
The head moves to the lens replacement position.



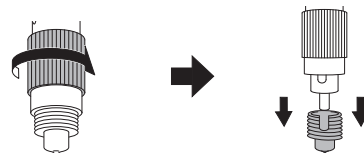
2 Remove the head front cover.



3 Remove the laser unit from the head.



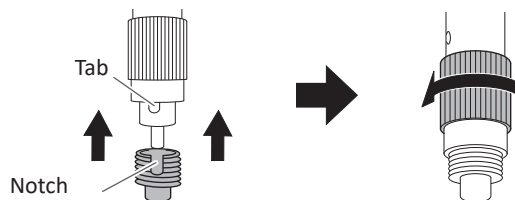
4 Loosen the screw at the tip of the laser unit, and then remove the lens.



3. Attach the new lens.

1 Attach the new lens to the laser unit.

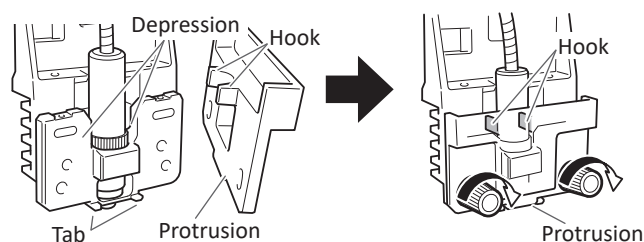
Align the tab with the notch and attach the new lens. Then, securely tighten the new lens until it cannot be screwed in any further.



2 Return the laser unit to the head, and then attach the cover.

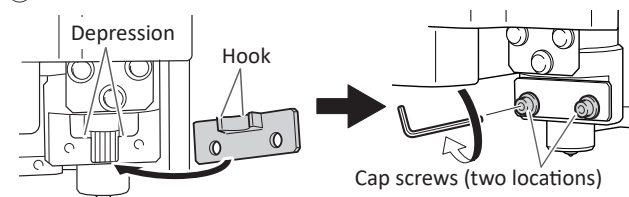
LD-80

- 1 Insert the cover's hooks into the depressions on the head.
- 2 Insert the protrusion at the bottom of the cover into the space between the two tabs at the bottom of the head.

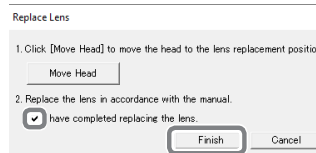


LD-300

1 Insert the cover's hooks into the depressions on the head.



3 In the following window, select the [Have you completed replacing the lens?] check box, and then click [Finish].



- You will return to the original window. Check that nothing is displayed for the indicator for [The amount of Lens usage].
- Do not click [Finish] until the replacement operation is finished. If you click [Finish] at the incorrect time, messages prompting you to replace the lens will no longer be displayed with the appropriate timing. Exercise caution.

4 Close the front cover.

This completes the work.

